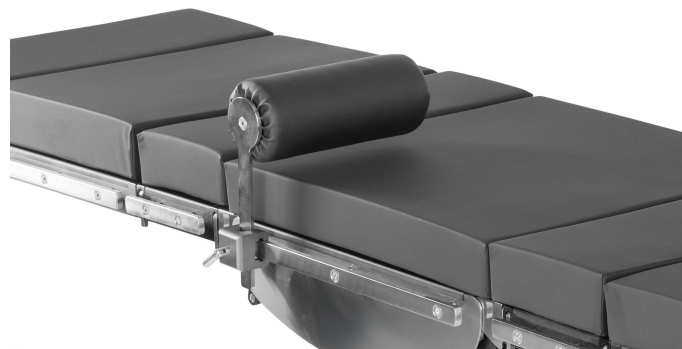


Tibia support SS2030

- horizontal leg support for knee and leg operations
- pad diameter 110 mm, length 270 mm
- flat rod 6x25 mm
- Recommended clamp: CL1210 (EU, UK) 100011043U (US)



Contacta con nosotras

Merivaara Corp.
Tarmontie 2-4
15860 HOLLOLA
FINLAND

+358 3 3394 611

merivaara@merivaara.com