

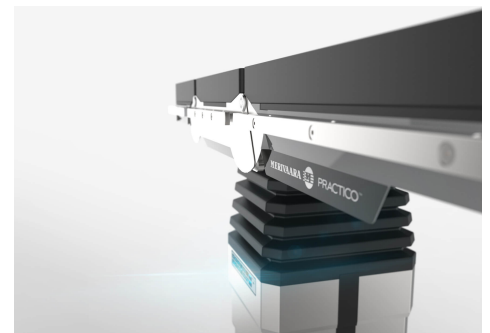
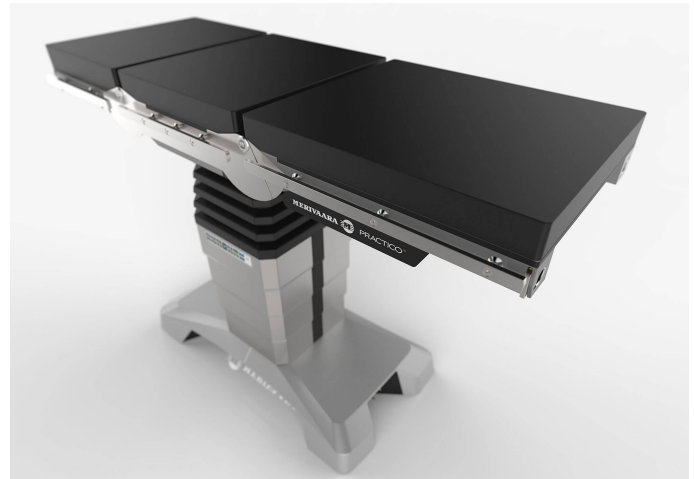
Smarter Practico

Smarter Practico operating table - the widest range of posture possibilities for surgical procedures

Smarter Practico operating table is specially designed with ergonomics in mind. Both the industry's widest range of posture possibilities and the smart controls of the table help the entire surgical team work more fluently.

Award-winning operating table

Smarter Practico operating table is designed according to the [Merivaara Design DNA concept](#). The Merivaara Design DNA includes key elements that ensure that Smarter Practico operating tables are easy to use, easy to clean, and easy to understand. Merivaara Design DNA reflects modern, customer-oriented functionality that focuses only on what is essential for the users – the user experience itself. The Merivaara Design concept has been recognized also officially. Smarter Practico operating table received the Fennia Prize Honourable Mention in 2020 for its excellent design. Smarter Practico operating table has also a [Design from Finland mark](#) awarded to companies that have evidence of excellence in Finnish design. The products and solutions using this mark are designed to be professional, user-friendly, and sustainable.





FENNIAPRIZE 20
HONOURABLE MENTION

Highlights

Improved features let you focus on the task at hand while superior ergonomic design improves the comfort of the whole surgical team. Comfort leads to concentration, confidence and better co-operation. That's efficiency.



- 1. High Safe working load (SWL)**
- 2. Memory position including height**
- 3. Multiple column heights**
- 4. Close access**
- 5. Electric floor lock, Small lower case**
- 6. Base cover also available in stainless steel**
- 7. Electric foot section (option)**

Benefits of the Smarter Practico operating table

1. ENHANCED ERGONOMICS

- Multiple Column Height Choices: General, Low, High
- Easily adaptable to multiple surgical applications
- Ergonomic for both the surgical team and the patient

2. SAFE & STRONG

- Up to 280 kg in all directions including slide
- Suitable for bariatric surgery with vast range of accessories
- Lifting capacity 460 kg

3. FLUENT ACCESSABILITY

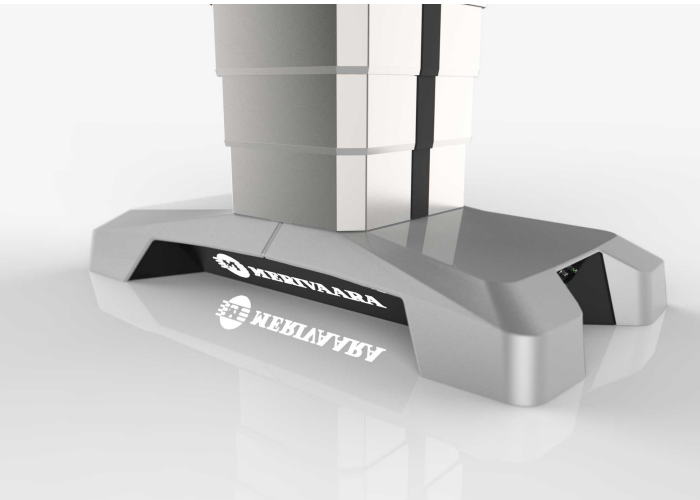
- The low height of the base allows 360 degree C-arm access
- The curved base design allows for the surgeon to gain closer access to the patient.
- 390 mm longitudinal slide allows for more C-arm accessibility making X-Ray and Fluoroscopic imaging possible

4. SMART HAND CONTROL

- Easy-to-use interface
- Fluent design and comfortable to hold
- Quick memory functions
- Endoscopic mode ensures safe and easy use in a low light environment
- Convenient battery health indicator

5. SMART MOVEMENTS

- The smart control system of the table recognizes potential mechanical collision situations.
- Multiple anti-collision adjustments, e.g., during deep Trendelenburg.
- Control system automatically performs correct compensative movements to allow for safe and smooth adjustments



Technical Specifications

--	--	--	--	--

	Slide and motorized leg sections	No Slide, motorized leg sections	Slide, No motorized leg sections	No Slide, No motorized leg sections
Trendelenburg angle (degrees)	± 30	± 30	± 30	± 30
Tilt angle (degrees)	± 20	± 20	± 20	± 20
Slide (mm/inch)	390 / 15,6"	-	390 / 15,6"	-
Back section angle (degrees)	+ 70 / - 40	+ 70 / - 40	+ 70 / - 40	+ 70 / - 40
Motorized leg sections angle (degrees)	+ 70 / - 105	+ 70 / - 105	-	-
Non-motorized leg sections angles (degrees)	-	-	+ 20 / - 90	+ 20 / - 90
Practico Max Lo height (mm/inch)	540-1030 / 21,3"-40,6"	553-1043 / 21,8"-41,1"	540-1030 / 21,3"-40,6"	-
Practico Max Hi height (mm/inch)	640-1130 / 25,2"-44,5"	653-1143 / 25,7"-45"	640-1130 / 25,2"-44,5"	-
Practico General height (mm/inch)	585-885 / 23"-34,8"	-	585-885 / 23"-34,8"	598-898 / 23,5"-35,4"
Table top width (mm/inch)	540 / 21,3"	540 / 21,3"	540 / 21,3"	540 / 21,3"
Number of table top sections	4-6	4-6	4-6	4-6
Safe working load (SWL)	280 kg / 617.3 lb	280 kg / 617.3 lb	280 kg / 617.3 lb	280 kg / 617.3 lb
Lifting capacity	460 kg / 1014.13 lbs	460 kg / 1014.13 lbs	460 kg / 1014.13 lbs	460 kg / 1014.13 lbs
Number of memory positions	1	1	1	1
Fifth wheel option	√	√	√	√
IR compability with Open OR	-	-	-	-
Mattress type	VEF 80 mm	VEF 80 mm	VEF 80 mm	VEF 80 mm
Electrical brakes	√	√	√	√
Battery operated (Li ion)	√	√	√	√
Standard back section compatibility	√	√	√	√
Beach chair back	-	√	-	√

section compatibility				
Eye-ENT back section compatibility	√	√	√	√
Kidney-bridge back section compatibility	√	√	√	√
Official product name: Practico				
Product code: 145000				
Manufacturer: Merivaara Corp.				
√ = included				
- = not available				

Contact us

Merivaara Corp.

Tarmontie 2-4
 15860 HOLLOLA
 FINLAND

+358 3 3394 611

merivaara@merivaara.com