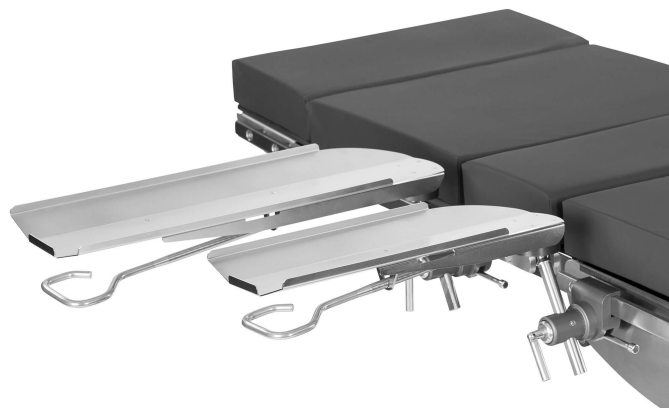


## AB2230 Armboard with rotation clamp

- long rod model
- one-handed adjustment armboard with rotation clamp
- versatile adjustment options; height, horizontal and vertical rotation, wide range of angle adjustments
- antimicrobial adjustment handle
- rod: 280 mm
- Required cushions: AB3010/ AB3110, short AB3020



### TECHNICAL SPECIFICATIONS

Lenght	620 mm
Width	170 mm
Max. patient weight	250 kg
Safe working load (SWL)	21 kg
Longitudinal tilt (37,5°/direction)	75°
Lateral tilt (37,5°/direction)	75°
Sideways movement (rotates around a ball joint)	360°
Weight	4,8 kg
Product code	AB2230 (EU), AB2231 (US), AB2232 (UK)

## Contact us

**Merivaara Corp.**  
Tarmontie 2-4  
15860 HOLLOLA  
FINLAND

+358 3 3394 611

[merivaara@merivaara.com](mailto:merivaara@merivaara.com)