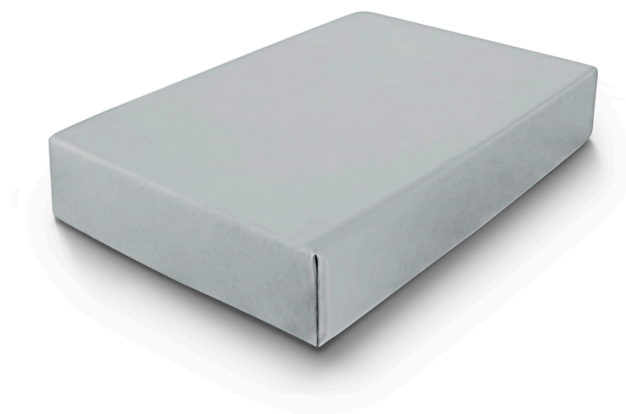


CS Supine Top (3" foam pad) CSM-2722-3-G

- Pressure management pad for supporting the patient in the supine and prone positions
- Reusable
- Regulatory compliance: CE, FDA, TGA, UKCA
- MD Class: I
- Length 460 mm
- Width 305 mm
- Height 85 mm
- Product code: CSM-2722-3-G
- Manufacturer: Care Surgical Limited



Contact us

Merivaara Corp.
Tarmontie 2-4
15860 HOLLOLA
FINLAND

+358 3 3394 611

merivaara@merivaara.com