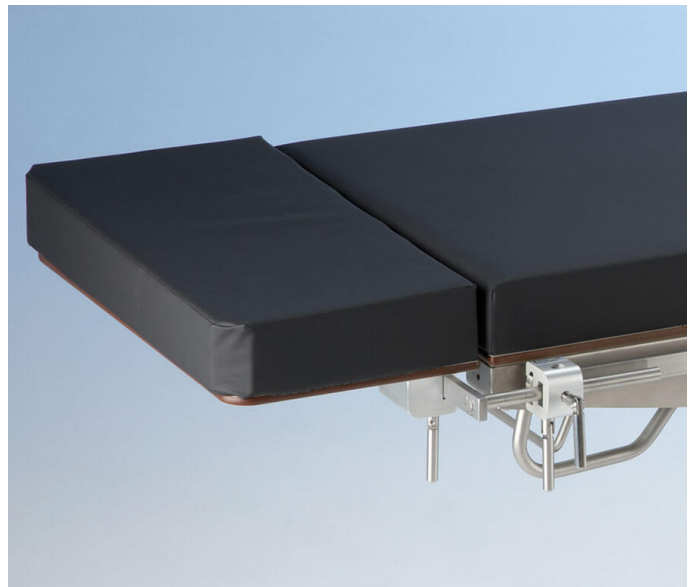
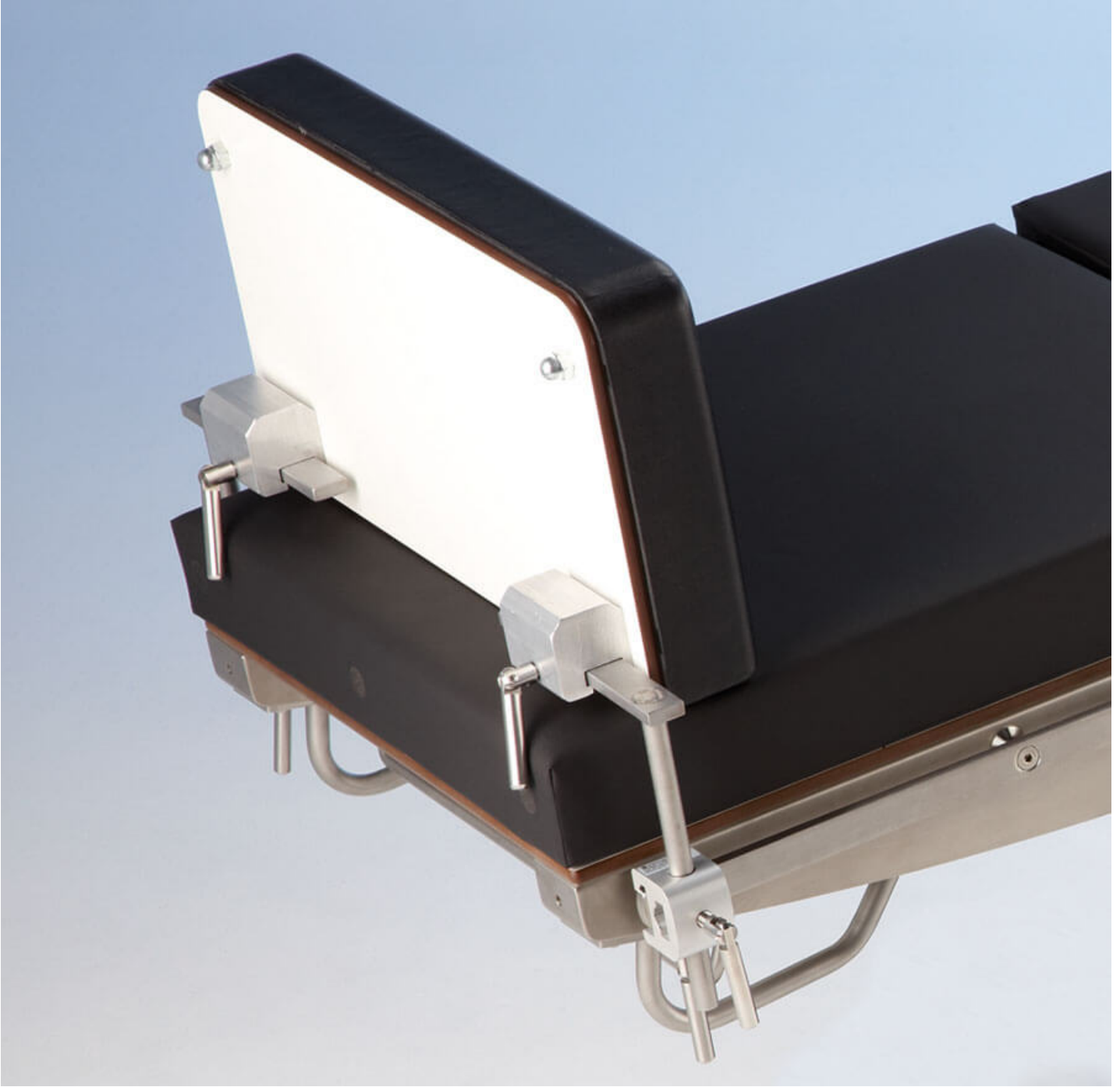


Foot rest / table extension 20114

To prevent the patient from sliding during procedures requiring reverse Trendelenburg. Available with both IS and VEF mattress. Suitable for all Merivaara tables. Universal clamps (2 pcs) included. Mattress size: 276 x 540 x 65 mm. Order no. 100 020 114 Foot rest / Extension section including mattress 100 000 124 Mattress for the section





Technical Specifications

Length	276 mm
Length (table top)	270 mm
Height	540 mm
Max. patient weight	225 kg
Safe working load (SWL)	29 kg
Weight	5.1 kg
Product Code	100020114

Contact us

Merivaara Corp.

Tarmontie 2-4
15860 HOLLOLA
FINLAND

+358 3 3394 611

merivaara@merivaara.com