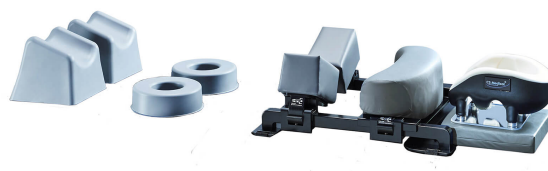


Spinal Floating System

The Spinal floating System is a versatile and cost-effective table-top platform that can be easily fitted to any standard operating table. With a weight capacity of 250 kg it enables patients to be safely positioned for a wide range of spinal procedures. The frame is fully radiolucent and the body supports allow the abdomen to hang freely with the aim of reducing venal pressure. Please check the availability in your country from Merivaara sales.



Including:

- Spine Frame
- Spine Frame Straps (set of 4)
- Prone Head Support System
- Comfort Chest Support – Standard
- Comfort Hip Supports – Standard (pair)
- Comfort Skin Shin Support
- Knee Ring (pair)
- Pad (2 Inch)
- Prone Face Cushion (box of 10)
- Comfort Covers 3 Piece Set (Box of 6 Sets)

CS Comfort Covers 30 mm

- 3 Piece Set (Box of 6 Sets)
- Order No. CSM-2606-1

CS Prone Head Support System

- Order No. CSM-2560-M

CS Prone Face Cushion

- Box of 10
- Order No. CSM-2510

CS Open Lateral Head Ring

- Box of 20
- Order No. CSM-2410

CSM-2902 CS Chest & Pelvic Supports

- 2 Sets per box

CSM-2820-G CS Comfort Skin Shin Support

CSM-2821-G CS Knee Ring

- pair

CSM-2568-2-G CS Pad 2 Inch (under the CS Prone One)

- color grey

Technical Specifications

Safe working load (SWL)	250 kg
Product Code	CSM-2715-G

Contact us

Merivaara Corp.

Tarmontie 2-4
15860 HOLLOLA
FINLAND

+358 3 3394 611

merivaara@merivaara.com