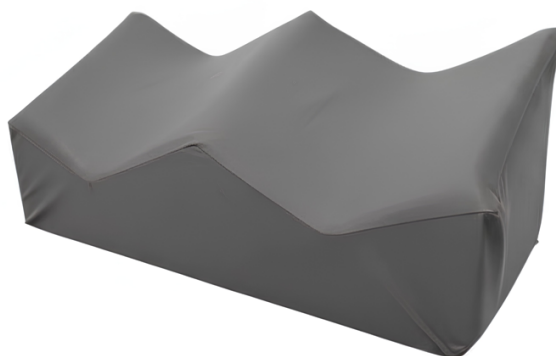


CS Easy Shin Support Grey CSM-3020-G

CS Easy Shin Support is designed to support the patient's shins in the prone position while allowing the ankles and feet to rest naturally. The ergonomic design helps distribute pressure more evenly across a larger contact surface, supporting patient comfort during procedures. Compared to traditional positioning solutions, the open structure reduces pressure on the toes and minimises pressure around the dorsalis pedis artery area. Reusable and suitable for a wide range of foot sizes.

Regulatory compliance: CE, FDA, UKCA
MD Class: I





Technical Specifications

Length	500mm
Width	220mm

Height	240mm
Product Code	CSM-3020-G
Manufacturer	Care Surgical Limited

Contact us

Merivaara Corp.
Tarmontie 2-4
15860 HOLLOLA
FINLAND

+358 3 3394 611

merivaara@merivaara.com