



Solido — Medical pendant solutions



Fluent usability

Since 1901

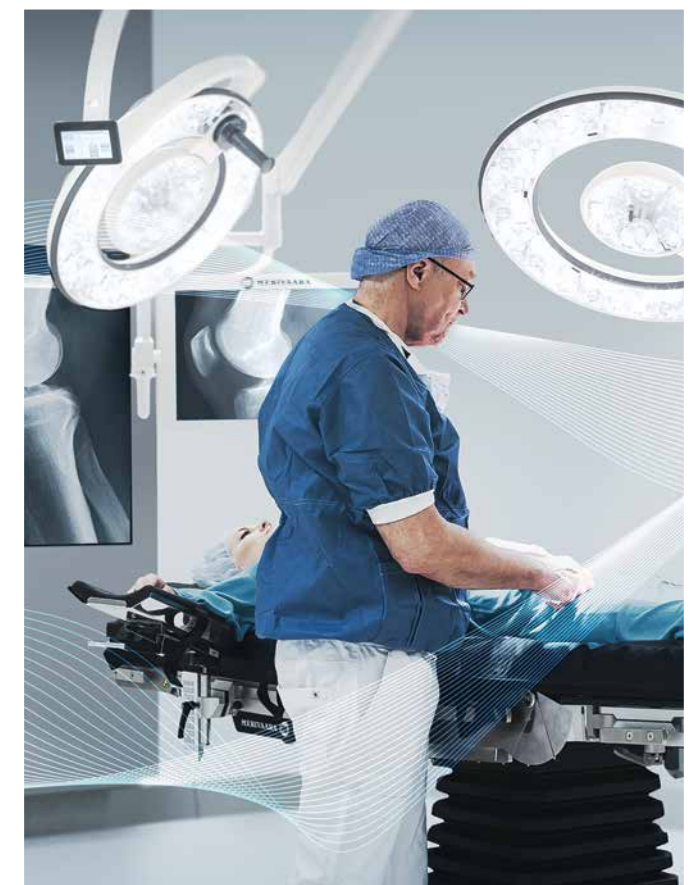
"In addition to the exquisite quality of work, we have taken the utmost interest in the functionality of the equipment. In this regard, several doctors committed to the cause have contributed their advice, based on their valuable experience."

Juho Merivaara in 1926, founder of Merivaara



In a modern operating room from the 1950s tables and lights were manually adjusted.

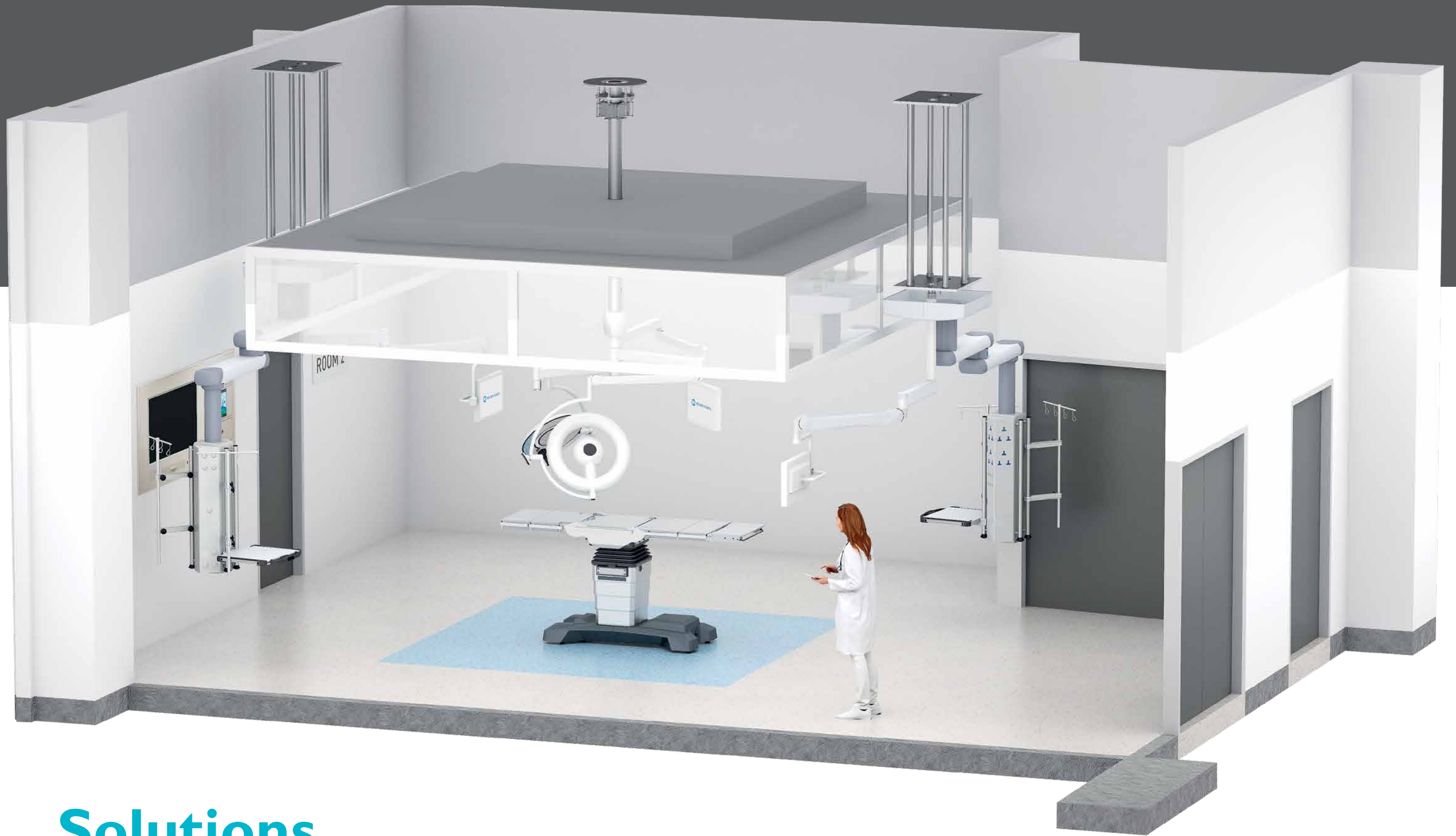
**DESIGN[®]
FROM
FINLAND**



We are proud that the company's values 120 years ago were so ahead of their time that they can still today be fully applied when designing new innovative solutions for healthcare professionals. This is demonstrated by our latest award-winning products, the Q-Flow surgical light and the Smarter Practico operating table with functionality and ease of use at the heart of the design. Our user interfaces are developed together with hospital personnel so that all our products and systems can be used intuitively.

We call this Fluent Usability; operating room teams can focus on patient care, not for the management of complex technologies. Top surgeons appreciate this all over the world.





Solutions

Merivaara Solutions offer operating rooms a wide range of high-quality products, systems and services. Our solutions not only guarantee patient safety, but also provide healthcare operators with the best value for money.

When designing our solutions around the entire surgical team, it is important for us to listen to the customer's needs. This allows us to ensure that the team can implement the procedures safely, quickly and reliably. At the same time, workflow is optimized and the productivity of the entire team will increase.

Merivaara has long experience in leading and implementing projects in operating rooms. For us, keeping projects to schedule and reducing costs is extremely important.

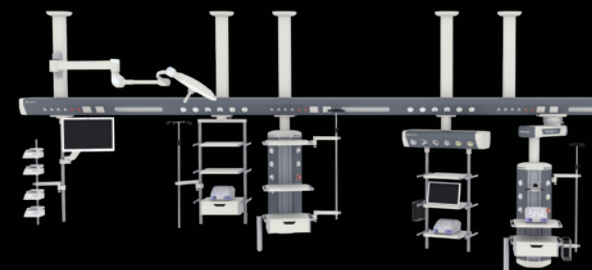
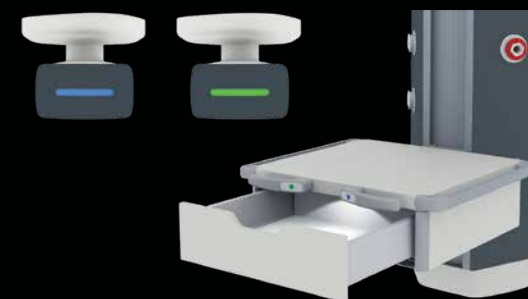
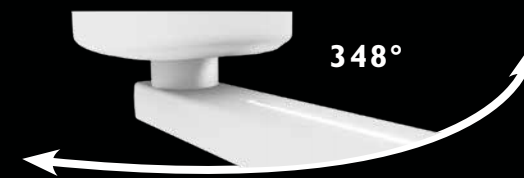
- SURGICAL LIGHTS • EXAMINATION LIGHTS
- OPERATING TABLES • TABLE ACCESSORIES
- INTEGRATION SYSTEMS • MONITORS & MONITOR ARMS
- PENDANTS • PROJECTS • MERIVAARA SERVICES

Functional design

Solido pendants are designed to provide medical teams with flexibility and ergonomics. The design of the pendants combines a modern and stylish look with ease of use and cleanability.

Solido is specifically designed for rooms where the users appreciate its innovative solutions. In the design, special attention has been paid to the ergonomic use of various devices, which improves the use of space and workflow. This increases the overall work efficiency. The braking system ensures maximum stability and accuracy as well as ease of movement. The slim profile of the Solido pendant takes up less space to move around the patient, and thanks to round corners there is no need to be worried about sharp edges to cause injury. Overall, using Solido pendants improves the ergonomics of the whole team.

Benefits of the Solido family



1. ERGONOMIC SOLUTIONS

When designing the Solido pendants, special attention was paid to the ergonomics and ease-of-use:

- Slim profiles take less space and are easy to move around the patient
- Round corners are ergonomic and help to avoid injuries
- Visual illumination for various functions make using the pendant convenient
 - Brake indicators
 - Ambient lighting
 - Drawer lighting
 - Color coded led lights to tell which joint is released
- Clear symbols to control motorized up and down movements
- Adjustable shelf height

2. REDUCED RISK OF INFECTION

- Seamless design and round corners make the pendants easy to clean
- No visible fixing screws and smooth surfaces allow easy disinfection

3. LARGE SELECTION OF DIFFERENT SOLUTIONS

Solido pendants are available in several different configurations and are always manufactured according to the customer's specifications. At the customers' request, individual profiles can be painted according to the customer's color preference (RAL color chart). The Solido pendants are suitable for operating rooms, intensive care units or recovery.

A wide range of accessories ensures that Solido pendant solutions are functional even for the demanding applications.

4. EASY TO MAINTAIN

Solido pendants are designed to be user-friendly and cost-effective from installation to maintenance. They are delivered pre-installed, which significantly reduces installation costs. The long-lasting and high-quality components ensure minimal maintenance and maximum reliability.

The cover of the Solido pendant is simple to remove, which makes access to the system easy for both installation and maintenance. Medical gases and electrical components are kept separate, which allows for safe maintenance.

By selecting the electromagnetic brakes, the need for maintenance is reduced due to the lack of friction material.

Surgical pendants

for operating rooms

SOLIDO™ pendants can be adapted to suit the needs of the surgeon or anaesthetist with all the required electrical and medical components. SOLIDO™ pendants are designed to provide the medical teams with maximum flexibility and reliability. The brake system ensures maximum stability and accuracy and ease of movement.

SOLIDO™ pendants are available in multiple configurations, which are always built to order. Please consult Merivaara sales for the optimal configuration for your needs.



Anesthesia pendants

for operating rooms



MEDIA BRIGDE
Our media bridge provides a flexible solution for the daily needs of the operating room and ICU. It carries all needed services (lights, sockets and switches, nurse call system, gas outlets) which can be arranged both inside and outside the bridge. As the system is fixed at top of the surgical table, it saves valuable floor space and gives better ergonomics to the surgical team.



SOLIDO™

- 1. Solido Single Arm
- 2. Solido Double Arm Motorized
- 3. Solido Double Arm
- 4. Solido Single Arm Motorized
- 5. Solido Retractable Column
- 6. Solido Spring Arm
- 7. Solido Media Bridge
- 8. Solido Double Arm Motorized Hammer
- 9. Solido Double Arm Motorized Horizontal
- 10. Solido Retractable Hammer Concept
- 11. Solido Spring Arm

SOLIDO™

Ceiling pendant configuration for operating rooms



A – Single arm
with electropneumatic or electromagnetic brake

B – Double arm
with electropneumatic or electromagnetic brake

E – Reverse double arm
with electropneumatic or electromagnetic brake (low ceiling application)



L – Slim spring arm
(manual vertical movement) only for Service head Slim
(Type 1L) only for cable without gas hoses

CM – Single motorized arm
(electrical vertical movement)
CS – Single spring arm
(manual vertical movement) with electropneumatic or electromagnetic brake

DM – Double motorized arm
(electrical vertical movement)
DS – Double spring arm
(manual vertical movement) with electropneumatic or electromagnetic brake



FM – Single motorized
(electrical vertical movement)
FS – Single spring
(manual vertical movement) with electropneumatic or electromagnetic brake, with service head

GM – Double motorized
(electrical vertical movement)
GS – Double spring
(manual vertical movement) with electropneumatic or electromagnetic brake, with service head

H – Retractable
(electrical vertical movement)

These configuration (Type 2, Type 3, Type 4T and Type 4ST) are also available with accessories.



IL – Slim
Electrical components, Without Gas outlets, only for Single spring arm (Type L)

I – Slim
Electrical components, Gas outlets

IT – Slim with two Ø25 pole
Electrical components, Gas outlets

2 – Standard
3 – Large
Available from the second part of the 2022



4T – Horizontal

4L – Horizontal

5L – Hammer head



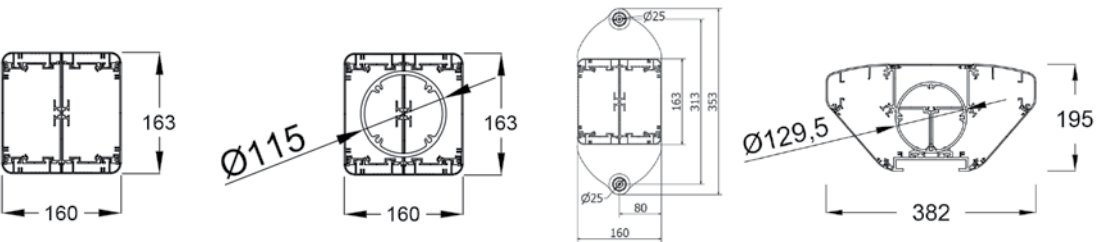
4ST – Horizontal

4C – Horizontal

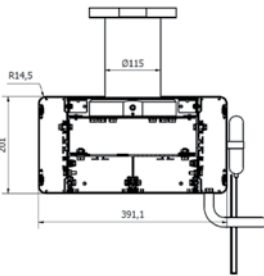
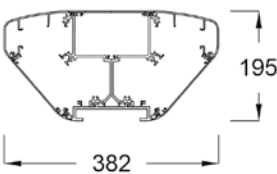


5C – Hammer head

6 – Monitor support
(Wide screen)
Monitor not included
Only for (A, B, E, CM, CS, DM, DS and H)



Ask details of the Large cross-sectional image from Merivaara Sales!



Version Tandem



Version with Monitor arm



Version Examination surgical light



Version Lifts patients



OK-ACHMI
Service and control management

* Accessories and configuration for illustration purpose only

* Available also in Tandem version

* Available also in Tandem version

* Available from 2023 also in Tandem version

Pendants

for intensive care units (ICU) or recovery

Easy installation and long-lasting, top-quality components ensure minimum maintenance and maximum reliability.

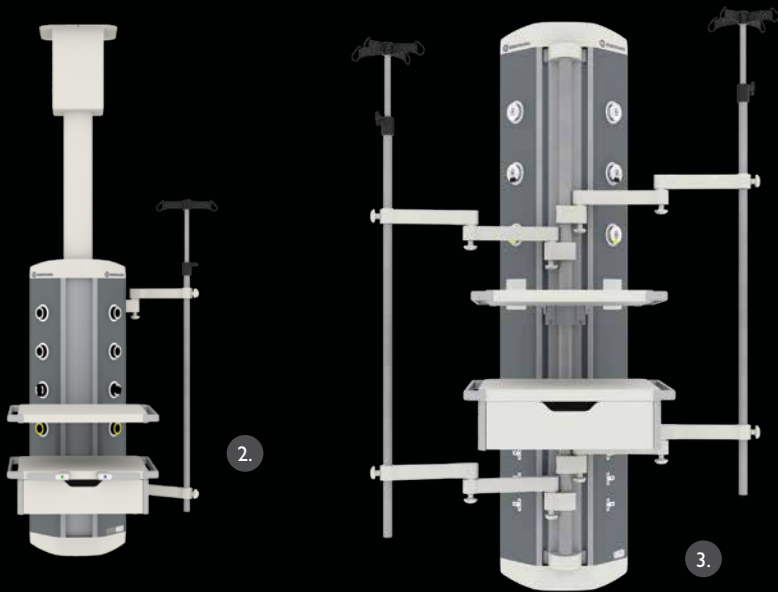
Versatility – match any specification with this product range.

Low electricity consumption thanks to innovative LED stripes which are available for all direct, indirect and even night lighting. Lesser maintenance, greater performance!

Protecting epoxy powder coating guarantees an adequate hygienic surface. This could be boosted further with the dedicated Antibacterial paint to ensure 100% shield against infectious agents.

Thickness of the profile and the technology adopted guarantee substantial resistance to wear and tear.

Wall mounted



Integrated patient lift



SOLIDO™

- 1. Solido Column
- 2.. Solido Retractable Column
- 3. Solido VWall
- 4. Solido Bridge
- 5. Solido Duo Double Arm Motorized Hammer
- 6. Solido 3-arm System with Conductor Arm
- 7. Solido Mobile
- 8. Solido Tandem with Lifting Bridge



Wide portfolio for intensive care units or recovery

The Solido pendant offers a wide range of configurations to meet different needs to build an effective ICU patient care facility. The design is optimized to improve the teamwork of all nursing personnel in the intensive care unit.

Track rail

Designed to guarantee complete ease of movement, the track rail allows sliding and safe mounting of intensive treatment equipment.

LED night light

This optional feature ensures a well-lit environment while the main ambient lighting is off. Perfectly integrated inside the ceiling pillars this system can be controlled from the unit itself or from an additional handset if needed.



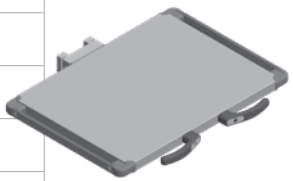
Anesthesia docking system

To make cleaning easier, we also provide an Anesthesia docking system for a convenient lifting of the anesthesia cart. Our system is compatible with the most common anesthesia carts.



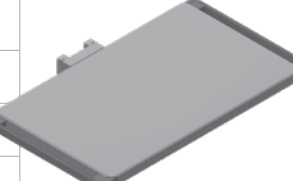
Shelves, painted steel, for ceiling pendant

Code	Name	Dimensions	Weight	Load capacity
OK-ACPSHFM	Shelf	L 460 x W 440 mm	7,4 kg	40 kg
OK-ACPSHFMR	Shelf with 2 x DIN rails	L 530 x W 440 mm	7,6 kg	40 kg
OK-ACPSHFMR7	Shelf with handle and 2 x DIN rails	L 530 x W 440 mm	7,8 kg	40 kg
OK-ACPSHFMLHR	Shelf with LED, handle and 2 x DIN rails	L 530 x W 440 mm	7,8 kg	40 kg
OK-ACPSHFMR7	Shelf with 2 x DIN rails	L 530 x W 440 mm	8 kg	70 kg
OK-ACPSHFMR7	Shelf with handle and 2 x DIN rails	L 530 x W 440 mm	8 kg	70 kg
OK-ACPSHF56M	Shelf	L 560 x W 440 mm	8,5 kg	35 kg
OK-ACPSHF56MR	Shelf with 2 x DIN rails	L 630 x W 440 mm	8,1 kg	40 kg
OK-ACPSHF56MHR	Shelf with handle and 2 x DIN rails	L 630 x W 440 mm	8,3 kg	35 kg
OK-ACPSHF70M	Shelf	L 700 x W 440 mm	10,09 kg	30 kg
OK-ACPSHF70MR	Shelf with 2 x DIN rails	L 770 x W 440 mm	10,1 kg	30 kg
OK-ACPSHF70MHR	Shelf with handle and 2 x DIN rails	L 770 x W 440 mm	10,3 kg	30 kg



Shelves, made of solid material BIOCLEAN, for ceiling pendant

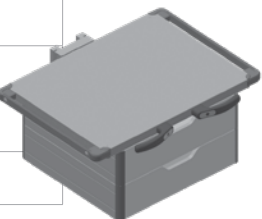
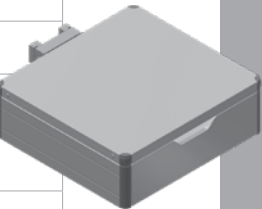
Code	Name	Dimensions	Weight	Load capacity
OK-ACPSHFS	Shelf	L 470 x W 450 mm	8,2 kg	40 kg
OK-ACPSHFSL	Shelf with LED spot light under the shelf	L 470 x W 450 mm	8,2 kg	40 kg
OK-ACPSHFSLHR	Shelf with LED spot light under the shelf, handle and 2 x DIN rails	L 470 x W 450 mm	8,2 kg	40 kg
OK-ACPSHF56SR	Shelf with 2 x DIN rails	L 530 x W 450 mm	8,7 kg	40 kg
OK-ACPSHF56SLR	Shelf with LED spot light under the shelf and 2 x DIN rails	L 530 x W 450 mm	8,7 kg	40 kg
OK-ACPSHF56SHR	Shelf with handle and 2 x DIN rails	L 530 x W 450 mm	8,7 kg	40 kg
OK-ACPSHF56SR	Shelf with 2 x DIN rails	L 630 x W 450 mm	9,2 kg	35 kg
OK-ACPSHF70SR	Expandable Shelf with 2 x DIN rails	L 770 x W 450 mm	9,2 kg	30 kg
OK-ACPSHF70SHR	Expandable Shelf with handle and 2 x DIN rails	L 770 x W 450 mm	9,4 kg	30 kg



BIOCLEAN offers a completely antimicrobial surface. The composite material is extremely long lasting and guarantees the adequate hygiene during all operating procedures.

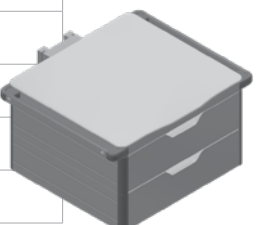
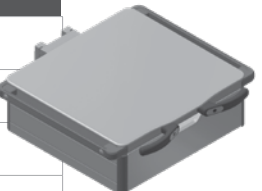
Drawer painted steel, for ceiling pendant

Code	Name	Dimensions	Weight	Load capacity
OK-ACPDRWM	Drawer	L 530 x W 440 x H 150 mm	13,3 kg	40 kg
OK-ACPDRWMR	Drawer with 2 x DIN rails	L 530 x W 440 x H 150 mm	16,6 kg	40 kg
OK-ACPDRWMHR	Drawer with handle and 2 x DIN rails	L 530 x W 440 x H 150 mm	18,8 kg	40 kg
OK-ACPDRWKMHR	Drawer with handle and 2 x DIN rails with key	L 530 x W 440 x H 150 mm	17 kg	40 kg
OK-ACPDRWMLHR	Drawer with LED spot light under the shelf (to light the drawer), handle and 2 x DIN rails	L 530 x W 440 x H 150 mm	17,1 kg	40 kg
OK-ACPDRW56MR	Drawer with 2 x DIN rails	L 630 x W 440 x H 150 mm	17,1 kg	35 kg
OK-ACPDRW56MHR	Drawer with handle and 2 x DIN rails	L 630 x W 440 x H 150 mm	17,3 kg	35 kg
OK-ACPDRW70MR	Drawer with 2 x DIN rails	L 770 x W 440 x H 150 mm	18,1 kg	40 kg
OK-ACPDRW70MHR	Drawer with handle and 2 x DIN rails	L 770 x W 440 x H 150 mm	18,5 kg	40 kg
OK-ACPDRWDMR	DOUBLE Drawer with 2 x DIN rails	L 530 x W 440 x H 270 mm	24,1 kg	40 kg
OK-ACPDWD56MHR	DOUBLE Drawer with handle and 2xDIN rails	L 630 x W 440 x H 270 mm	25 kg	40 kg



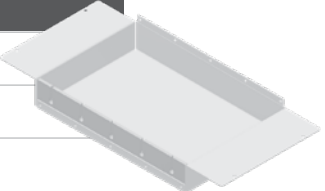
Drawer BIOCLEAN made of solid material, for ceiling pendant

Code	Name	Dimensions	Weight	Load capacity
OK-ACPDRWS	Drawer	L 470 x W 450 x l 60 mm	15 kg	40 kg
OK-ACPDRWSL	Drawer with LED	L 470 x W 450 x l 60 mm	16,3 kg	40 kg
OK-ACPDRWSR	Drawer with 2 x DIN rails	L 530 x W 450 x H l 60 mm	16,6 kg	40 kg
OK-ACPDRWSLR	Drawer with LED and 2 x DIN rails	L 530 x W 450 x H l 60 mm	16,8 kg	40 kg
OK-ACPDRWSHR	Drawer with handle and 2 x DIN rails	L 530 x W 450 x H l 60 mm	16,8 kg	40 kg
OK-ACPDRWSLHR	Drawer with LED, handle and 2xDIN rails	L 530 x W 450 x H l 60 mm	17,6 kg	40 kg
OK-ACPDRW56SHR	Drawer with handle and 2 x DIN rails	L 630 x W 450 x H l 60 mm	17,3 kg	35 kg
OK-ACPDRW70SHR	Drawer with handle and 2 x DIN rails	L 770 x W 450 x H l 60 mm	18,3 kg	30 kg
OK-ACPDRWDSR	DOUBLE drawer with 2 x DIN rails	L 530 x W 450 x H 280 mm	24,1 kg	40 kg



Accessories fixed under shelf or drawer

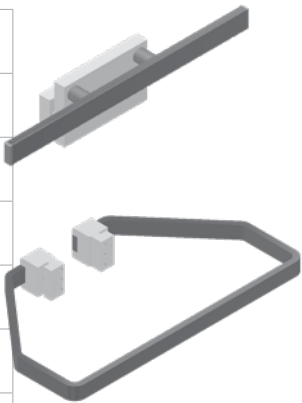
Code	Name
OK-ACPKEYSH	Extractable keyboard BIOCLEAN made of Solid Material for fixing under the shelf
OK-ACCBLBOX	Cable collection metal box, to be fixed under shelves or drawers on pendant unit



OK-ACCBLBOX

Rails

Code	Name	Dimensions	Load capacity
OK-ACPLM261000	Vertical DIN rail, fixing to vertical column rear part. Factory assembly only!	L 1000 mm	40 kg
OK-ACPLM261200	Vertical DIN rail, fixing to vertical column rear part. Factory assembly only!	L 1200mm	40 kg
OK-ACPRAILF	Front DIN rail, fixing to vertical column front rail, stainless steel	25 x 10 mm, L 350 mm	15 kg
OK-ACPRAILO	Perimetral DIN rail, fixing to vertical column front rail, stainless steel	25 x 10 mm	10 kg
OK-ACPRAILU	Perimetral DIN rail for horizontal console or hammer head, stainless steel	25 x 10 mm	10 kg
OK-ACBHAM300	DIN rail for hammer head, stainless steel, BHU mounted	25 x 10 mm, L 300 mm	10 kg
OK-ACBTTL0300	DIN rail for horizontal console, stainless steel, BHU mounted	25 x 10 mm, L 300 mm	20 kg



Rail accessories

Code	Name	Dimensions	Load capacity
OK-ACPREADRWMR	Drawer made of painted steel for vertical rail with 2 x DIN rails	L 530 x W 440 x H 150 mm	40 kg
OK-ACPREASHFMR	Shelf made of painted steel for vertical DIN rail of pendant with 2 x DIN rails	L 530 x W 440 mm	40 kg
OK-ACCABHO4	Cable hook for OKI ISOLA mounted on DIN rail 25 x 10	-	-



OK-ACCABHO4

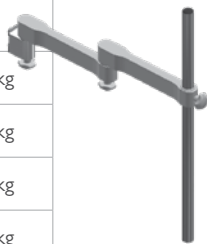
Pole D25mm with 1 single swivelling arm 230mm. Stainless steel. Fixing to vertical column side.

Code	Name	Dimensions	Load capacity
OK-ACADIVPP	Adaptor for fixing vertical poles with single or double swivelling arm to the vertical column front rail	-	-
OK-ACPIIS2503	Swivelling vertical pole *	H 300 mm	15 kg
OK-ACPIIS2506	Swivelling vertical pole *	H 600 mm	15 kg
OK-ACPIIS2508	Swivelling vertical pole *	H 800 mm	15 kg
OK-ACPIIS2510	Swivelling vertical pole *	H 1000 mm	15 kg
OK-ACPIIS2512	Swivelling vertical pole *	H 1200 mm	15 kg
OK-ACPIIS2506IV	Swivelling vertical pole, telescopic, with 4 plastic hook IV stand *	H 600 mm	15 kg
OK-ACPIIS2508IV	Swivelling vertical pole, telescopic, with 4 plastic hook IV stand *	H 800 mm	15 kg
OK-ACPIIS2510IV	Swivelling vertical pole, telescopic, with 4 plastic hook IV stand *	H 1000 mm	15 kg
OK-ACPIIS2512IV	Swivelling vertical pole, telescopic, with 4 plastic hook IV stand *	H 1200 mm	-
OK-ACPIIS2506IVX	Swivelling vertical pole, telescopic, with 4 s. steel hook IV stand *	H 600 mm	15 kg
OK-ACPIIS2508IVX	Swivelling vertical pole, telescopic, with 4 s. steel hook IV stand *	H 800 mm	15 kg
OK-ACPIIS2510IVX	Swivelling vertical pole, telescopic, with 4 s. steel hook IV stand *	H 1000 mm	15 kg
OK-ACPIIS2512IVX	Swivelling vertical pole, telescopic, with 4 s. steel hook IV stand *	H 1200 mm	15 kg
	* Factory assembly only!		



Pole D25mm with 1 double swivelling arm 230 + 230mm. Stainless steel. Fixing to vertical column side.

Code	Name	Dimensions	Load capacity
OK-ACADIVPP	Adaptor for fixing vertical poles with single or double swivelling arm to the vertical column front rail	-	-
OK-ACPIID2506	Swivelling vertical pole *	H 600 mm	15 kg
OK-ACPIID2508	Swivelling vertical pole *	H 800 mmm	15 kg
OK-ACPIID2510	Swivelling vertical pole *	H 10000 mm	15 kg
OK-ACPIID2512	Swivelling vertical pole *	H 12000 mm	15 kg
OK-ACPIID2506IV	Swivelling vertical pole telesscopic, with 4 plastic hook IV stand *	H 600 mm	15 kg
OK-ACPIID2508IV	Swivelling vertical pole telesscopic, with 4 plastic hook IV stand *	H 800 mm	15 kg
OK-ACPIID2510IV	Swivelling vertical pole telesscopic, with 4 plastic hook IV stand *	H 1000 mm	15 kg
OK-ACPIID2512IV	Swivelling vertical pole telesscopic, with 4 plastic hook IV stand *	H 1200 mm	15 kg
OK-ACPIID2506IVX	Swivelling vertical pole telesscopic, s. steel hook IV stand *	H 600 mm	15 kg
OK-ACPIID2508IVX	Swivelling vertical pole telesscopic, s. steel hook IV stand *	H 800 mm	15 kg
OK-ACPIID2510IVX	Swivelling vertical pole telesscopic, s. steel hook IV stand *	H 1000 mm	15 kg
OK-ACPIID2512IVX	Swivelling vertical pole telesscopic, s. steel hook IV stand *	H 1200 mm	15 kg
	* Factory assembly only!		



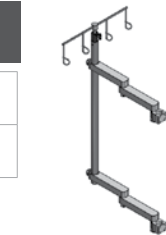
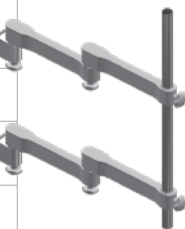
Pole D25mm with 2 single swivelling arm 230mm. Stainless steel. Fixing to vertical column side.

Code	Name	Dimensions	Load capacity
OK-ACADIVPP	Adaptor for fixing vertical poles with single or double swivelling arm to the vertical column front rail	-	-
OK-ACPI2S2503	Swivelling vertical pole *	H 300 mm	40 kg
OK-ACPI2S2506	Swivelling vertical pole *	H 600 mm	40 kg
OK-ACPI2S2508	Swivelling vertical pole *	H 800 mm	40 kg
OK-ACPI2S2510	Swivelling vertical pole *	H 1000 mm	40 kg
OK-ACPI2S2512	Swivelling vertical pole *	H 1200 mm	40 kg
OK-ACPI2S2515	Swivelling vertical pole *	H 1500 mm	40 kg
OK-ACPI2S2506IV	Swivelling vertical pole telescopic, with IV stand with 4 plastic hooks *	H 600 mm	40 kg
OK-ACPI2S2508IV	Swivelling vertical pole telescopic, with IV stand with 4 plastic hooks *	H 800 mm	40 kg
OK-ACPI2S2510IV	Swivelling vertical pole telescopic, with IV stand with 4 plastic hooks *	H 1000 mm	40 kg
OK-ACPI2S2510IV7	Swivelling vertical pole telescopic, with IV stand with 4 plastic hooks *	H 1000 mm	40 kg
OK-ACPI2S2512IV	Swivelling vertical pole telescopic, with IV stand with 4 plastic hooks *	H 1200 mm	40 kg
OK-ACPI2S2506IVX	Swivelling vertical pole telescopic, with IV stand with 4 s. steel hooks *	H 600 mm	40 kg
OK-ACPI2S2508IVX	Swivelling vertical pole telescopic, with IV stand with 4 s. steel hooks *	H 800 mm	40 kg
OK-ACPI2S2510IVX	Swivelling vertical pole telescopic, with IV stand with 4 s. steel hooks*	H 1000 mm	40 kg
OK-ACPI2S2512IVX	Swivelling vertical pole telescopic, with IV stand with 4 s. steel hooks *	H 1200 mm	40 kg
	* Factory assembly only!		



Pole D25mm with 2 double swivelling arm 230+230mm, stainless steel - Fixing to vertical column side

Code	Name	Dimensions	Load capacity
OK-ACADIVPP	Adaptor for fixing vertical poles with single or double swivelling arm to the vertical column front rail, stainless steel	-	-
OK-ACPI2D2506	Swivelling vertical pole telescopic *	H 600 mm	40 kg
OK-ACPI2D2508	Swivelling vertical pole telescopic *	H 800mm D25 for accessories with 2 double arms 230 + 230 mm	40 kg
OK-ACPI2D2510	Swivelling vertical pole telescopic *	H 1000 mm	40 kg
OK-ACPI2D2512	Swivelling vertical pole telescopic *	H 1200 mm	40 kg
OK-ACPI2D2506IV	Swivelling vertical pole telescopic *	H 600 mm with 4 plastic hook IV stand	40 kg
OK-ACPI2D2508IV	Swivelling vertical pole telescopic *	H 800 mm with 4 plastic hook IV stand	40 kg
OK-ACPI2D2510IV	Swivelling vertical pole telescopic *	H 1000 mm with 4 plastic hook IV stand	40 kg
OK-ACPI2D2512IV	Swivelling vertical pole telescopic *	H 1200 mm with 4 plastic hook IV stand	40 kg
OK-ACPI2D2506IVX	Swivelling vertical pole telescopic *	H 600 mm with 4 s. steel hook IV stand	40 kg
OK-ACPI2D2508IVX	Swivelling vertical pole telescopic *	H 800 mm with 4 s. steel hook IV stand	40 kg
OK-ACPI2D2510IVX	Swivelling vertical pole telescopic *	H 1000 mm with 4 s. steel hook IV stand	40 kg
OK-ACPI2D2512IVX	Swivelling vertical pole telescopic *	H 1200 mm with 4 s. steel hook IV stand	40 kg
	* Factory assembly only!		



Pole D25 mm with 2 single swivelling arm 230 mm. Fixing to vertical column front rail

Code	Name	Dimensions	Load capacity
OK-ACGPI2S2510IV	Swivelling vertical pole telescopic	H 1000 mm for accessories with IV stand with 4 hooks	-

Pole D38mm with 2 double swivelling arm 230+230mm and 4 hooks

Code	Name	Dimensions	Load capacity
OK-AC8I2D3810IV4	Swivelling vertical pole s. steel telescopic	H 1000 mm	-
OK-AC8I2D3815IV4	Swivelling vertical pole s. steel telescopic	H 1500 mm	-



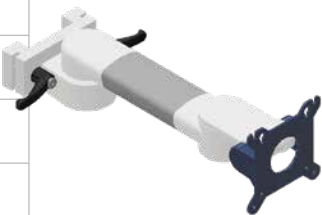
Vertical accessory pole, stainless steel. Fixing on column aluminum profile (vertical column side).

Code	Name	Dimensions	Load capacity
OK-ACPIFF2506	Fixed vertical pole stainless steel *	H 600 mm D25 for accessories	50 kg
OK-ACPIFF2508	Fixed vertical pole stainless steel *	H 800 mm D25 for accessories	50 kg
OK-ACPIFF2510	Fixed vertical pole stainless steel *	H 1000 mm D25 for accessories	50 kg
OK-ACPIFF2512	Fixed vertical pole stainless steel *	H 1200 mm D25 for accessories	50 kg
OK-ACPIFF3806	Fixed vertical pole stainless steel *	H 600 mm D38 for accessories	50 kg
OK-ACPIFF3808	Fixed vertical pole stainless steel *	H 800 mm D38 for accessories	50 kg
OK-ACPIFF3810	Fixed vertical pole stainless steel *	H 1000 mm D38 for accessories	50 kg
OK-ACPIFF3812	Fixed vertical pole stainless steel *	H 1200 mm D38 for accessories	50 kg
OK-ACPIFF3815	Fixed vertical pole stainless steel *	H 1500mm D38 for accessories	50 kg
	* Factory assembly only!		



CIMmed monitor arm holders, integrated cable management as standard

Code	Name	Dimensions	Load capacity
OK-ACPGCXW	Adaptor for for fixing GCX monitor arm to the Solido vertical column front rail	-	-
OK-ACARM230GP	Single arm monitor holder with VESA 75/100 **	L 300 mm	18 kg
OK-ACARM230GEP	Single arm monitor holder with GE swivelable bracket **	L 300 mm	18 kg
OK-ACARM230PHP	Single arm monitor holder with Philips swientable bracket **	L 300 mm	18 kg
OK-ACARM230MIP	Single arm monitor holder with 5" plunge plate for Mindray **	L 300 mm	18 kg
OK-ACARM230GT	Single arm with camera holder swivelable bracket **	L 300 mm	18 kg
OK-ACARM33030GP	Double arm monitor holder with VESA 75/100 **	L 300 + 300 mm	18 kg
OK-ACARM33030GDIN	Double arm monitor holder with VESA 75/100 Fixing on horizontal DIN rail	L 300 + 300 mm	15 kg
OK-ACARM230FP	Single arm monitor holder with VESA swivelable bracket and keyboard holder. **	L 300 mm	18 kg
OK-ACARM431FP	Single arm monitor holder, height adjustable with VESA 75/100 and keyboard/mouse tray. **	L 310 mm	-
OK-ACARM33030FP	Double arm monitor holder with W-bracket VESA 75/100 and keyboard/mouse tray **	L 300 + 300 mm	18 kg
OK-ACARM230TNP	Single arm with swivelling shelf, fixing on pendant **	L 300 mm	18 kg
OK-ACARM33030TNP	Double arm with swivelling shelf, fixing on pendant **	L 300 + 300 mm	15 kg
OK-ACARM431GP	Single arm monitor holder, height adjustable with VESA 75/100	L 310 mm	2–22 kg
OK-ACARM431PHP	Single arm monitor holder, height adjustable with Philips swivelling bracket **	L 310 mm	2–22 kg
OK-ACARM73130GP	Double arm monitor holder, height adjustable with VESA swivelling bracket **	L 310 mm	2–22 kg
OK-ACARM73130FP	Double arm monitor holder, height adjustable with VESA swivelling bracket and keyboard holder **	L 310 mm	2–22 kg
OK-ACARM431TNP	Single arm, height adjustable with swivelling shelf **	L 310 mm	2–22 kg
OK-ACARM73130TNP	"Double arm, height adjustable with swivelling shelf **	L 310 mm	2–22 kg
	** Fixing on the vertical rail of the vertical column		



OK-ACARM230GP



OK-ACARM431PHP



OK-ACARM73130TNP

Infusion- and Pump carrier systems

Code	Name	Load capacity
I9900412	Infusion arm system (double pole Ø25/Ø18 mm version), with universal clamps, stainless steel / aluminium for mounting to a central tube Ø 38 mm	-
Z2N6643S	Swiveling pump holding system (tube Ø25 mm), with two universal clamps for vertical tube, stainless steel / aluminium - mounting arms 2 x L 300 mm	-
Z2N6643S	Side carrier for IWS-system, complete with IV-pole with adjustment range 1500–2450 mm • 1x stainless steel tube Ø 33,7 mm • 2 x horizontal arms • 2 x mounting brackets for medical rails • 1 x stainless IV-Pole with screw height adjustment • bottle bar with 6 safety bottle hooks	-
I1000422	IV-Pole straight Ø25/Ø18 mm with single handed height adjustment, regulating range 1175-2040 mm, stainless steel	8 kg (2 kg/hook)
I1002212	IV-Pole angled Ø25/Ø18 mm H1180-1510 mm • 4 safety bottle hooks, for wall rail • 2 x 45 ° angled, with rail clamp and wall support • Single handed safety height adjustment and additional screw height adjustment for anti-twist protection • Stainless steel / aluminium	8 kg (2 kg/hook)
I1009272	IV pole (ICU unit) • 4 safety bottle hooks • Single handed height adjustment: 370 mm • Stainless steel / aluminium • Safety bottle hooks, stainless steel • With medical rail clamp, for assembling onto wall rails 25 x 10 mm	8 kg (2 kg/hook)



Z2N6643S



I1009272

Pole accessories

BOTTLE HOLDERS					
Materials/Finishing: Stainless steel					
Z2N06392	Plug-In	2 kg / hook			
Z2N06102	For 5 L bottles	5 kg / hook			
Z2N06552	Bottle bar	L 500 mm	4 hooks		
Z2N06542	Bottle bar	L 600 mm	6 hooks		
Z-DOCK18	Tube holder	Ø 38 mm			
Z2N06422	For round tube	Ø 25 mm	1 hook	Screw height adjustment	

COAT HOLDER			
Materials/Finishing: Stainless steel / aluminium			
Z2N6661S	Coat holder with quick-hand-fastener	(1 kg / hook)	

SHELVES			
Z2N63422	For tube, s. steel	Ø 25 mm	315 x 275 mm
Z2N0754A	With clamp for tube, s.steel	Ø 38 mm	300 x 250 mm
K2S7043A	Monitor shelf for tube, steel, white coated	Ø 25 mm	240 x 248 mm

BASKETS			
Z2S0663N	For round tube with clamp, aluminium coated	Ø 25 mm	250 x 90 x 200 mm
Z2S0664N	For round tube with clamp, aluminium coated	Ø 38 mm	250 x 90 x 200 mm
Z-PR005	With quick-hand-fastener, stainless steel / aluminium		300 x 200 x 100 mm

MEDICAL RAILS			
Materials/Finishing: Stainless steel/Aluminium			
Z2N70432	With clamp	Ø 25 mm	558 mm
Z-PR004	With quick-hand-fastener, for round tube	Ø 25-33,7 mm	500 mm
Z2N70332	With clamp	Ø 38 mm	558 mm

HOLDERS FOR DRAINAGE BAGS			
Materials/Finishing: Stainless steel / aluminium			
Z2N07152	Holder for bags	Ø 25 mm	2 hooks (distance 160 mm)
Z2N6681S	Hook, with quick-hand-fastener		
Z-PR001	Holder with quick-hand-fastener	2 hooks	

INFUSION HANGERS			
Z2N3002A	For round tube	Ø 38 mm	2 hooks. Length from middle of clamp approx. 275 mm
Z2N3020A	For round tube	Ø 38 mm	2 hooks + additional lateral hook
Z2N3003A	For round tube	Ø 38 mm	3 hooks
Z2N3030A	For round tube	Ø 38 mm	3 hooks + additional lateral hook
Z2N3004A	For round tube	Ø 38 mm	4 hooks
Z2N3040A	For round tube	Ø 38 mm	4 hooks + additional lateral hook

PLATES AND DOCUMENT CLIPBOARDS			
Materials/Finishing: Stainless steel/Aluminium			
Z-PR003	File-plate with quick-hand-fastener	Ø 25-33,7 mm	300 x 250 mm
Z2N6591S	Document Clipboard, with quick-hand-fastener blue	Ø 25-33,7mm	

PUMP HOLDERS			
Materials/Finishing: Stainless steel/Aluminium			
Z2N06312	For 2 devices, with screw height adjustment	Ø 25 mm	
Z-PR002	For 2 devices, with quick-hand-fastener	Ø 25-33,7mm	
Z2N70432	For 4 devices	Ø 25 mm	

OTHER ACCESSORIES			
Materials/Finishing:			
Z2N09303	Compact aluminium rail 25 x 10 mm (split)	Ø 38 mm	110 x 110 mm
Z2K09343	Cable / tube holder, plastic, white	Ø 38 mm	
Z2N6560S	Adjustable holder for glove dispenser, 3-fold, w. silver quick-hand-fastener, size approx.		400 x 210 (265) x 120
Z-HYG100	Universal bracket for masks dispensers • adjusting range width 67-116 mm, depth 50-90 mm	Ø 25 mm	
Z2N6586S	Disinfectant dispenser without plate, for bottles 500 ml, with long lever • fixing to pole with quick release fastener • stainless steel, aluminium, color silver		
Z2N0616S	Drip bowl 2 litres, with quick-hand-fastener • stainless steel / aluminium, silver		300 x 200 x 100 mm

Rail accessories

CLAMPS			
Z2N09112	Extension clamp for round tube with clamp for medical rails	Ø 38 mm	aluminium
Z2N09132	Extension clamp for round tube, with clamp for medical rails	Ø 25 mm	aluminium
Z2N0647W	Clamps with t-screw, for medical rails	hole 18 mm	aluminium
Z2N0650W	Clamps with t-screw, for medical rails	hole 25 mm	aluminium
Z2N0618A	Set of 2 medical rail clamps, 1 clamp adjustable (100-200 mm) and 1 clamp fixed length	hole 25 mm	white
Z2N6638W	Universal clamp with 4 drill holes at the back For attachment to medical rails 25 x 10 and round tubes.	Ø 18-40 mm	aluminium
Z2N6642S	Universal clamp with socket for round tube For attachment to medical rails 25x10 and round tube Ø 18-40	Ø 18 mm	aluminium
Z2N6641S	Universal clamp with socket for round tube For attachment to medical rails 25 x 10 and round tube Ø 18-40	Ø 25 mm	aluminium
Z2N6639S	Universal clamp with adapter for lamp For attachment to medical rails 25 x 10 and round tube Ø 18-40	Ø 18 mm	
Z2N0684S	Medical rail with universal clamp, L350 mm For attachment to medical rails 25 x 10 and round tube Ø 18-40		

ARMS			
Z2N6650S	Holding arm to plug into universal clamp Z2N6641S for round tube	Ø 25 mm	aluminium RAL 9016 coated
Z2N6652A	Swivel arm for infusion pole. Clamp can be retrofitted.	Ø 25 mm	white
Z2N6653A	Double swivel arm for infusion pole. Clamp can be retrofitted.		white

WIRE BASKETS			
Z2S0665N	With rail clamp, grey, fixing on DIN rail	Capacity load 5kg	250 x 90 x 200 mm
Z2S0666N	With 2 rail clamps, epoxy coated white-grey steel, fixing on DIN rail	Capacity load 5kg	500 x 120 x 100 mm

SHELVES			
Materials/Finishing: stainless steel / aluminium			
Z2N07602	Foldable shelf for medical rail 25 x 10 mm	Capacity load 10 kg	375 x 232 mm
Z2N07332	Shelf with edge guard with two medical rail clamps	Capacity load 4 kg	300 x 250 mm
Z2N09002	For DIN-Rail 25 x 10mm		540 x 360 mm
Z2N09032	For DIN-Rail with lateral rails 25 x 10 mm		540 x 360 mm
Z2N09012	For DIN-Rail 25 x 10mm, with 1 drawer		540 x 360 mm

BOTTLE AND TRASH HOLDERS			
9814500	Eurodispenser 3 Flex bottle holder, stainless steel / plastic, for bottles 500ml • fixing to taple top, IV-pole, hospital bed • Can be cleaned and disinfected mechanically and autoclaved.		
Z2N06202	Trash holder 245x385x185mm for medical rail 25 x 10 mm, stainless steel / aluminium, complete with 3 trash bags. Capacity load 2 kg		

GLOVES DISPENSERS			
Z2N09353	Gloves dispenser 2-fold for medical rail 25 x 10 mm, aluminium coated, silver Capacity load 2 kg	280 x 270 x 100 mm	
Z2N09363	Gloves dispenser 3-fold for medical rail 25 x 10 mm, aluminium coated, silver Capacity load 2 kg	390 x 260 x 100 mm	
Z2N65522	Gloves dispenser 3-fold for medical rail 25 x 10 mm, stainless steel / aluminium Capacity load 2 kg	240 x 132 x 96 mm	

CATHETER BASKETS			
Materials/Finishing: stainless steel			
Z2N08122	Electropolished surface, two hooks for wall rail. Capacity load 5 kg	150 x 100 x 280 mm	
Z2N08132	Electropolished surface, two hooks for wall rail. Capacity load 5 kg	150 x 100 x 480 mm	

JOINT ARMS			
Z2N06528	Joint arm with 4 hose clamps, hose holder frontal 360° swivable at flexible part • joining pin Ø18 x L 35mm • working radius approx. 1190mm • stanless steel/plastic		
Z2S06527	Joint arm with hose clamps, without medical rail clamp • joining pin Ø18 x L 35mm • steel chromium plated • working radius approx. 1,000mm		

CABLE ACCESSORIES			
Materials/Finishing:			
Z2N06832	Cable arm to mount on DIN-rail 25 x 10mm incl. 4 hose clips, stainless steel • working radius 800 mm		
Z2K09353	Cable / Tube holder for rail 25 x 10mm, white, plastic	Capacity load 2 kg	300 x 240 mm
Z2K09363	Cable-clip, plastic, for medical rails 25 x 10 mm		

OTHER ACCESSORIES			
Z2N6644S	Mounting tube with universal clamp For attachment to medical rails 25x10 and round tube Ø 18-40	Ø 25 mm	pole H 500 mm
Z2N07162	Holder for pumps, pole, with medial DIN rail clamp	Ø 25 mm	pole H 500 mm

Standard vertical service head

Thanks to its 3-piece modular design, the height of the vertical column is determined by the required connections and equipment.

Configuration and variability

We produce detailed drawings based on the specifications provided by the customer. During the design phase, it is possible to modify the location of the interfaces in the console.

All outlets (electricity, data and AV) are based on the same standard box base. This allows easy transfer of access points if user needs changes later. When planning options for future needs, the flexibility of the console allows easily changes and expansion of the acitivities.

Below is the maximum number of connections to each vertical console length.

Head column height	Max. no. of electrical components	Max. no. of gas outlets	Total max. no of connections
300 mm	4 pcs	4 pcs	8 pcs
600 mm	12 pcs	8 pcs	18 pcs
800 mm	12 pcs	10 pcs	20 pcs
1000 mm	22 pcs	14 pcs	32 pcs
1200 mm	28 pcs	16 pcs	35 pcs
1500 mm	36 pcs	20 pcs	43 pcs
1700 mm	40 pcs	22 pcs	46 pcs

In reference to the standard HTM 02-1 reduce the maximum number of 30 %.



Horizontal service heads

Allows more free space underneath the console compared to a vertical console. A commonly used solution as an anesthetic pendant. Horizontal service head also allows shelves to be mounted below (not available for hammer head).

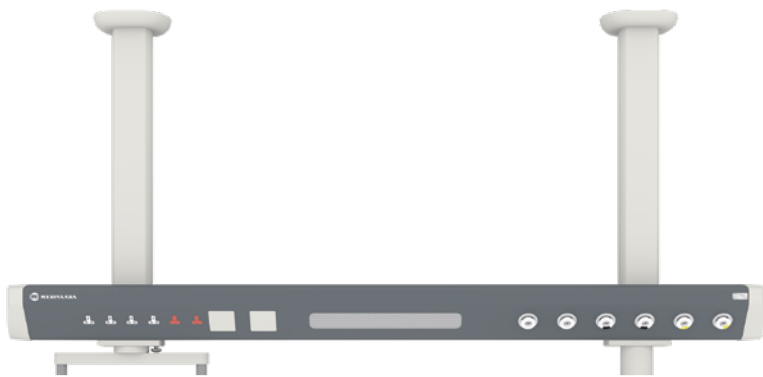


	Horizontal service head	Hammer head service head
Dimensions (mm):	L 820 x W 382 x H 195 Length can be modified on request	L 800 x W 382 x H 195 Length can be modified on request
Max. no. of connections:	10x electricity, 6x gas - max. 16 connections	20x electricity, 12x gas - max. 32 connections
Mounting connections:	Tilted sections (2) in the front and rear side for mounting connections.	Sections (3) in the front, rear and lower side for mounting connections. Gases available in all 3 sides.
Fixing accessories to:	<ul style="list-style-type: none">• DIN rails, available in both ends• Vertical tubes (H800/1200/1500mm) below the column for fixing shelves, drawers and monitor arms	<ul style="list-style-type: none">• DIN rails, available in both ends
Control:	<ul style="list-style-type: none">• Handle on the long side• Wired hand-control (option)	<ul style="list-style-type: none">• Handle in the lateral side (option)• Wired hand-control (standard)
Options:	N/A	N/A
Brake systems:	Electropneumatic - 24Vcc - 4 bar min – 6 bar max Electromagnetis - 24 Vcc In an emergency (power failure, magnetic or brake button failure), the pendant can be moved by pushing firmly on the arm or console without damaging the joint.	

Suspended unit with a ceiling fixing

The track rail is designed to guarantee complete ease of movement. You can safely slide and secure all the equipment you need with the help of the rail.

Both sides of the unit can be equipped with the medical equipment.



	Solido Bridge
Dimensions (mm):	L 2000 / 2500 / 3000

Range and system loads

A – Single arm non-motorized



ARM LENGTH (mm)	LOAD CAPACITY OF ARM (Kg)	MAXIMUM TORQUE (Nm)	MAXIMUM VERTICAL FORCE (N)
600	400	2390	4302
800	320	2570	3546
900	300	2724	3370
1000	300	3034	3384
1200	280	3426	3223

B – Double arm non-motorized



ARM LENGTH (mm)	LOAD CAPACITY OF ARM (Kg)	MAXIMUM TORQUE (Nm)	MAXIMUM VERTICAL FORCE (N)
600+600	280	3511	3365
900+600	260	4150	3218
900+900	240	4644	3066
800+800	260	4418	3232
1000+800	240	4656	3066
800+1000	220	4279	2869
1000+1000	180	4017	2511
1200+900	160	3840	2330

CM – Single motorized arm



ARM LENGTH (mm)	LOAD CAPACITY OF ARM (Kg)	MAXIMUM TORQUE (Nm)	MAXIMUM VERTICAL FORCE (N)	MOTORIZED LIFT (mm)
800	300	2409	3684	430
1000	250	2536	3223	550
1250	145	1907	2232	750

DM – Double motorized arm



ARM LENGTH (mm)	LOAD CAPACITY OF ARM (Kg)	MAXIMUM TORQUE (Nm)	MAXIMUM VERTICAL FORCE (N)	MOTORIZED LIFT (mm)
600+800	260	4026	3527	430
600+1000	220	3960	3169	550
900+800	260	5010	3576	430
900+1000	220	4837	3218	550
1000+800	220	4633	3198	430
1000+1000	180	4346	2840	550
800+800	260	4681	3561	430
800+1000	220	4540	3198	550

Operational temperature range	5°C – 35°C	Operating rooms	ICU
Relative humidity range	Between 30% and 75%	x	x
Atmospheric pressure:	From 700to 1060hPa	x	-
Supply voltage	100-230 VAC 50/60 Hz	x	x
Auxiliary voltage (usually)	24Vdc–24Vac	x	-
Low voltage	12–24 V-AC/DC		x
Power consumption		x	x
- Lighting	Max 150W		
- Electrical socket	Max 2000W for each socket		
Brake system	24 Vcc, min 4Bar – max 6Bar	x	-
- Electropneumatic Brakes	24 Vcc		
- Electromagnetic Brakes			
Wire minimum section	Lights 1.5 mmq Electrical sockets 2.5 sq.mm Ground 2.5/6 sq.mm	-	x
Service head	Adjustable friction	x	-
Classification according to the degree of protection against penetration of liquids and external agents	Against penetration of liquids and external agents IP20.	x	x
Noise level	Less than 35 dB	x	-
Color	Frame is white (RAL 9010 matt), effect color in the columns and ABS covers is grey (RAL 9017 matt). Other RAL colors available on request.	x	x
Ceiling fixing	Clamped onto the ceiling with an adjustable bracket.	-	x
Wall fixing	Screwed onto the wall through a special bracket.	-	x
Testing	The products are fully tested and ready for immediate installing.	-	x
Aluminium	Structural profile not less than 3.5mm/cover profile not less than 1.8mm Alloy 6063 T6.	-	x
Testing in production for each single unit	For each unit, the following tests are performed: - grounding impedance protection in accordance with 8.6 of standard EN 60601-1 - standard measurement of leakage current and dielectric strength in accordance with 8.7, 8.8, 16.6 of EN 60601-1 - Tests on medical gas and vacuum distribution in accordance with 12.3, 12.4, 12.5, 12.6 of EN ISO 7396-1 - Testing facilities on evacuation of anaesthetic gases in accordance with 12.2, 12.3, 12.4 of EN ISO 7396-2 Tests carried out on end-of-line product form an integral part of this manual	x	x
Testing in production for each single unit	For each unit the following tests are performed: - grounding impedance protection in accordance with 18f) of standard EN 60601-1 - standard measurement of leakage current in accordance with 19.3 and 19.4 of EN 60601-1 - measurement of dielectric strength, in accordance with 20.3 and 20.4 of standard EN 60601-1 - requirements as in 59.101.1, 59.102.1 and 59.103.1; 59.101.2); 59.102.2 b), 59.103.2); 59.101.2BC), 59.102.2 (c) and 59.103.2. b) – pressure tests in accordance with 59.101.2. d) and 59.102.2. d)	-	x
Electromagnetic interference	The operation of other devices placed near the medical device (as portable equipment or furniture) can cause electromagnetic interference or other interference, always check with qualified personnel	x	x
EC certificate 1548/MDD	The devices are made in compliance with Directive 93/42/EEC concerning medical devices Annex II with certification CE0051.	x	x
Regulation	MDR	x	x
Maintenance	Medical gases and electrical components are kept separated. For this reason no special caution during maintenance service is needed.	x	x
Cleaning	The epoxy-polyester paint or the anodic oxidation guarantees the durability of all external surfaces. Cleaning is recommended with a soft cloth soaked with a non-alcoholic and gentle detergent and disinfectant.	x	x
GMDN code	35630	x	x



Health Technology with a Human Touch



MERIVAARA CORP.

Lahti, Finland, Tel. +358 3 3394 611,
merivaara@merivaara.com www.merivaara.com

MERIVAARA WORLDWIDE

Merivaara's headquarters, with R&D, production, sales, marketing and after-sales service functions, are located in Lahti, Finland. Merivaara has subsidiaries in Sweden (Merivaara AB), UK (Merivaara Ltd) and a sales organisation in Russia. Additionally, Merivaara's products are sold in more than 120 countries by a network of distributors.

The status of the information, specifications and illustrations in this publication is indicated by the date of publication. Whilst the greatest care has been taken over its compilation, Merivaara Corp. is not responsible for any errors or omissions. Merivaara Corp. reserves the right to make changes to the technology, features, specifications and design of the equipment and models without notice. Please check the Merivaara website for the latest updated specifications and other information.

All trademarks are Merivaara property unless otherwise stated. Patents granted or pending.

©Merivaara Corp. DOC ID: 6175EN-0, Date: 9/2022

